

A Brief History of the Victorian Cemetery

In 1853 the Marquis of Ailesbury donated a plot of land to the Burial Board of Marlborough for the establishment of the town's new graveyard following the closure of the existing Parish Church cemeteries of St Mary the Virgin and St Peter and St Paul. The Cemetery was designed to reflect the fashion of the time to include separate burial areas for



Anglican, non-conformist and for the people who died in the adjacent Marlborough Union Workhouse.

However, the Burial Board were short of money and could not afford to start the construction of the Mortuary Chapel so, the Bishop of Salisbury refused to consecrate the Cemetery until the chapel was built.

In 1855 the Bishop of Salisbury finally consecrated the Old Graveyard probably due to a great deal of pressure from a variety of establishments including the Government.



In 1864 the Mortuary Chapel was finally built as well as a Lych Gate.

In 1924 the Victorian Cemetery was closed and the new Municipal Borough Cemetery was opened which is still in use today.

In the 1950's the Mortuary chapel was demolished, and the Lych Gate was reused in Fyfield.

From the 1960's to 1990's the Victorian Cemetery became neglected and overgrown.

From the 1990's to today Marlborough Town Council began a programme of clearing and actively managing the undergrowth and trees.

In 2014 the Friends of the Victorian Cemetery was established. They continue to care for the Victorian Cemetery to this day.

The Friends of the Victorian Cemetery

The Friends of the Victorian Cemetery meets on the second Monday of each month, with an additional core group meeting on a Friday morning between 10am and 12 noon, weather dependant.



We work alongside Marlborough Town Council maintaining the cemetery. We do jobs such as pruning, keeping brambles, nettles and docks in check, strimming around selected graves to show off the beautiful Victorian

railings, tending the Paupers grave and planting native wildflowers. We try to improve the biodiversity of the cemetery and over the years have planted wild cyclamen, English bluebells, ferns and foxgloves among many others that have been bought or donated. We also nurture the wildlife there such as owls, bats, birds and insects.

Friends of the Victorian Cemetery have even won awards for their dedication and hard work.

Being a Friend of the Victorian Cemetery is extremely rewarding, you get the benefit of working outdoors in a beautiful environment, companionship and a great sense of well being and achievement.



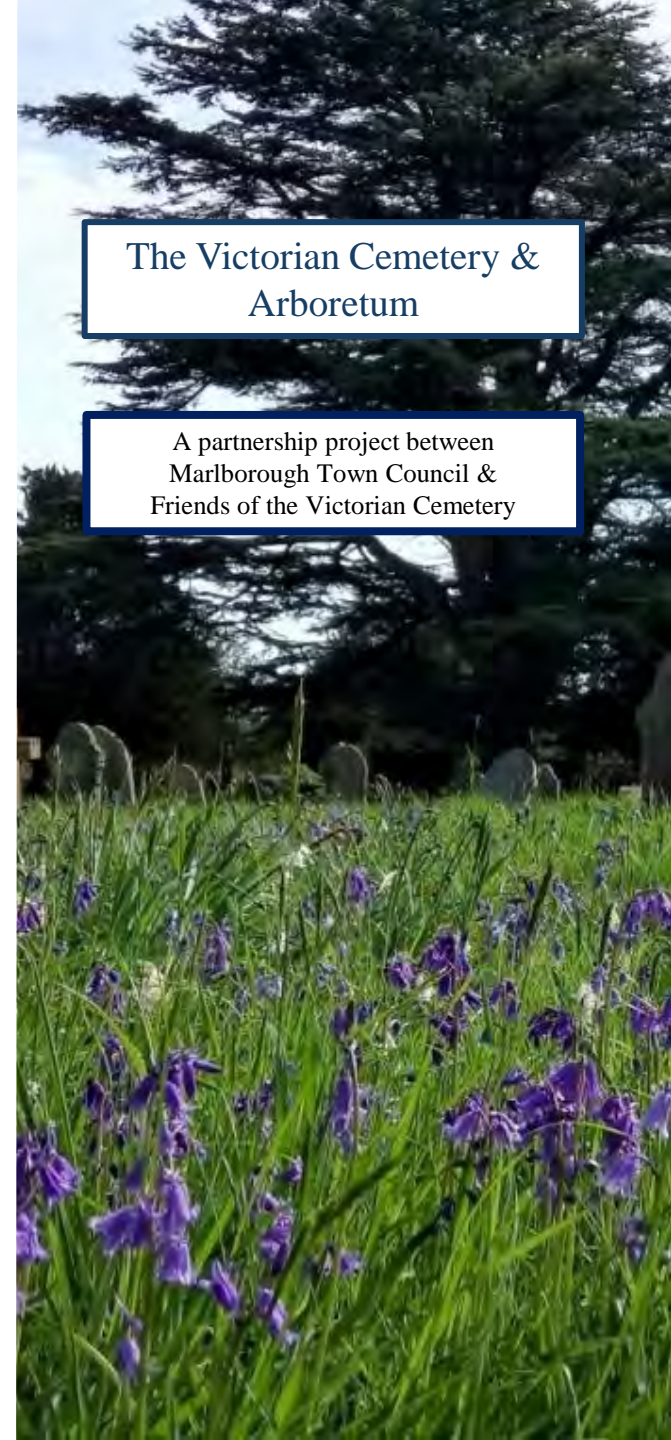
For more information on how to volunteer for the Friends of the Victorian Cemetery please contact Marlborough Town Council on 01672 512487 or email: enquiries@marlborough-tc.gov.uk

Historical information provided by Kim Wakeham

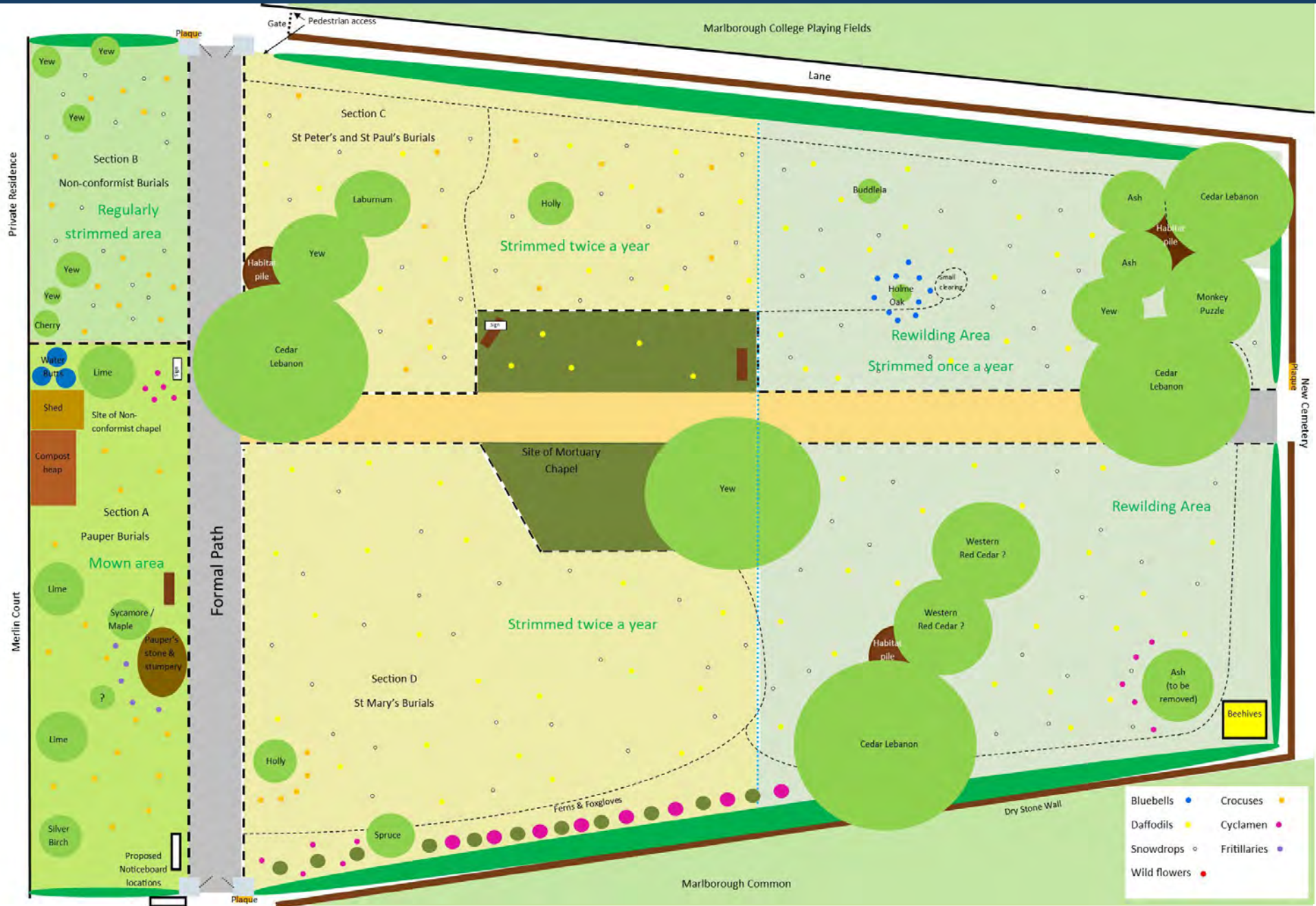


The Victorian Cemetery & Arboretum

A partnership project between Marlborough Town Council & Friends of the Victorian Cemetery



Our vision for the Victorian Cemetery & Arboretum



- | | | | |
|--------------|---|--------------|---|
| Bluebells | • | Crocuses | • |
| Daffodils | • | Cyclamen | • |
| Snowdrops | ○ | Fritillaries | • |
| Wild flowers | • | | |