



Élan Cité

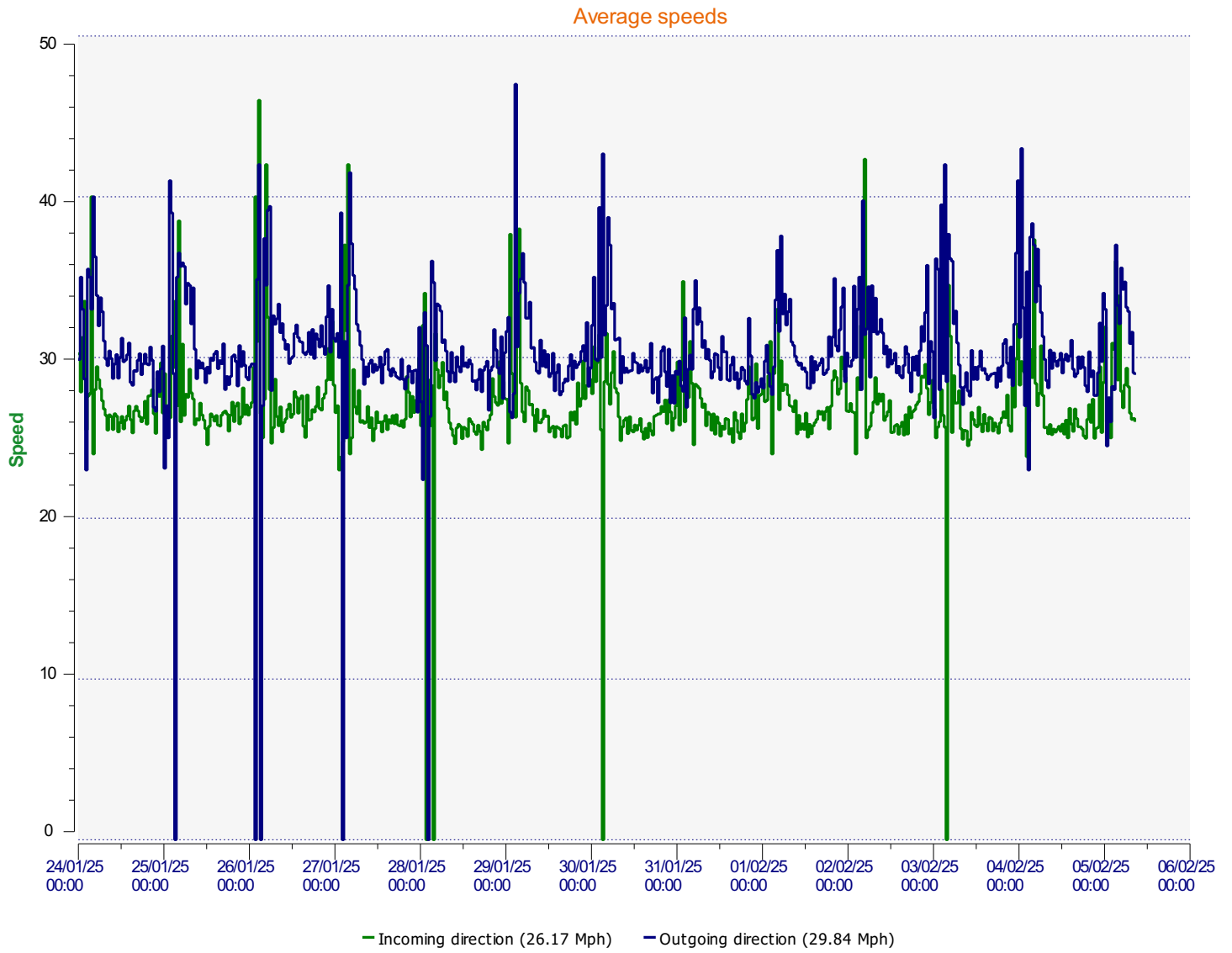


DÉTECTER • INFORMER • SÉCURISER

Start date: Friday, January 24, 2025 12:00 AM
End date: Wednesday, February 5, 2025 9:00 AM

Location: London Road - 30mph

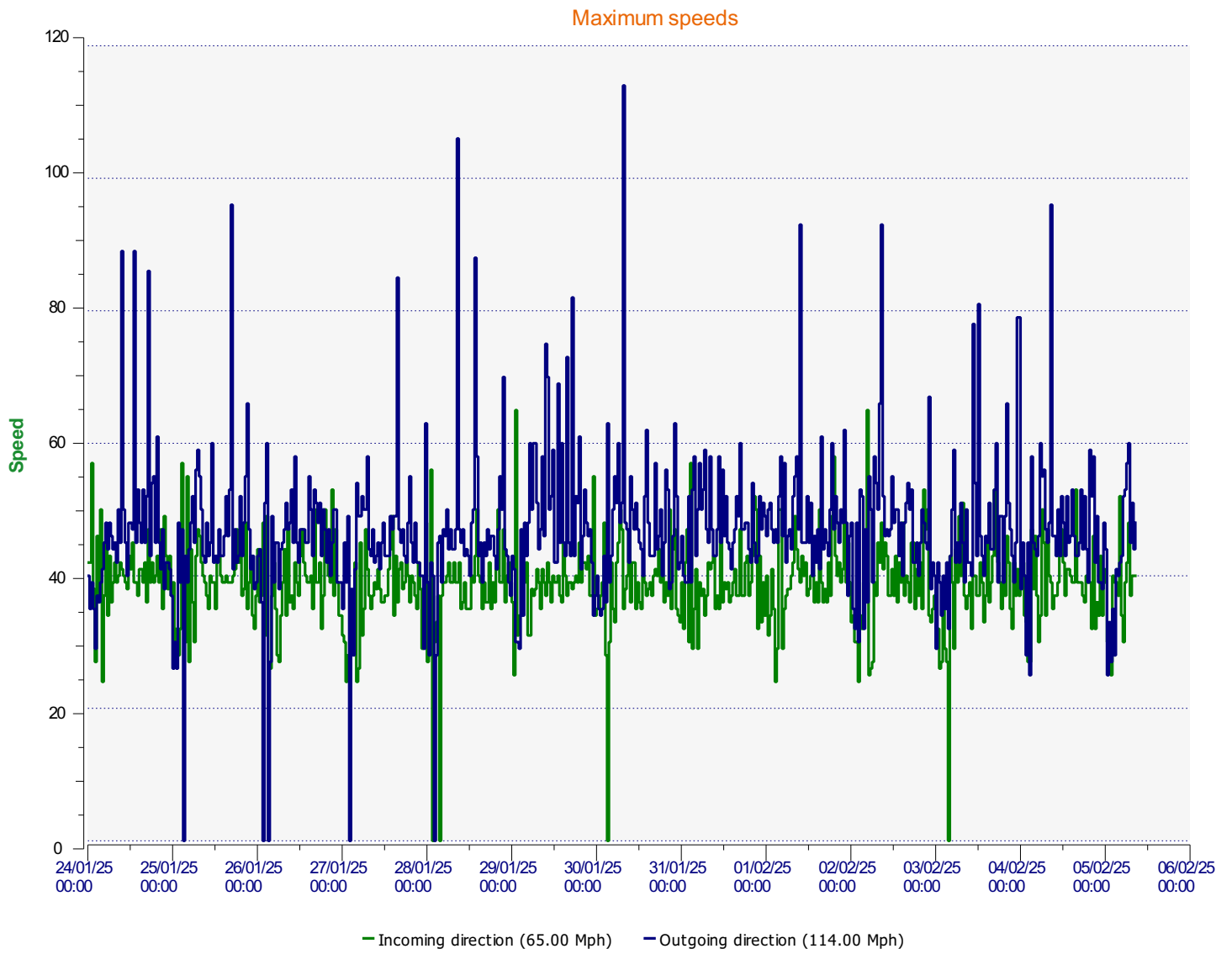
Comments:



Start date: Friday, January 24, 2025 12:00 AM
End date: Wednesday, February 5, 2025 9:00 AM

Location:

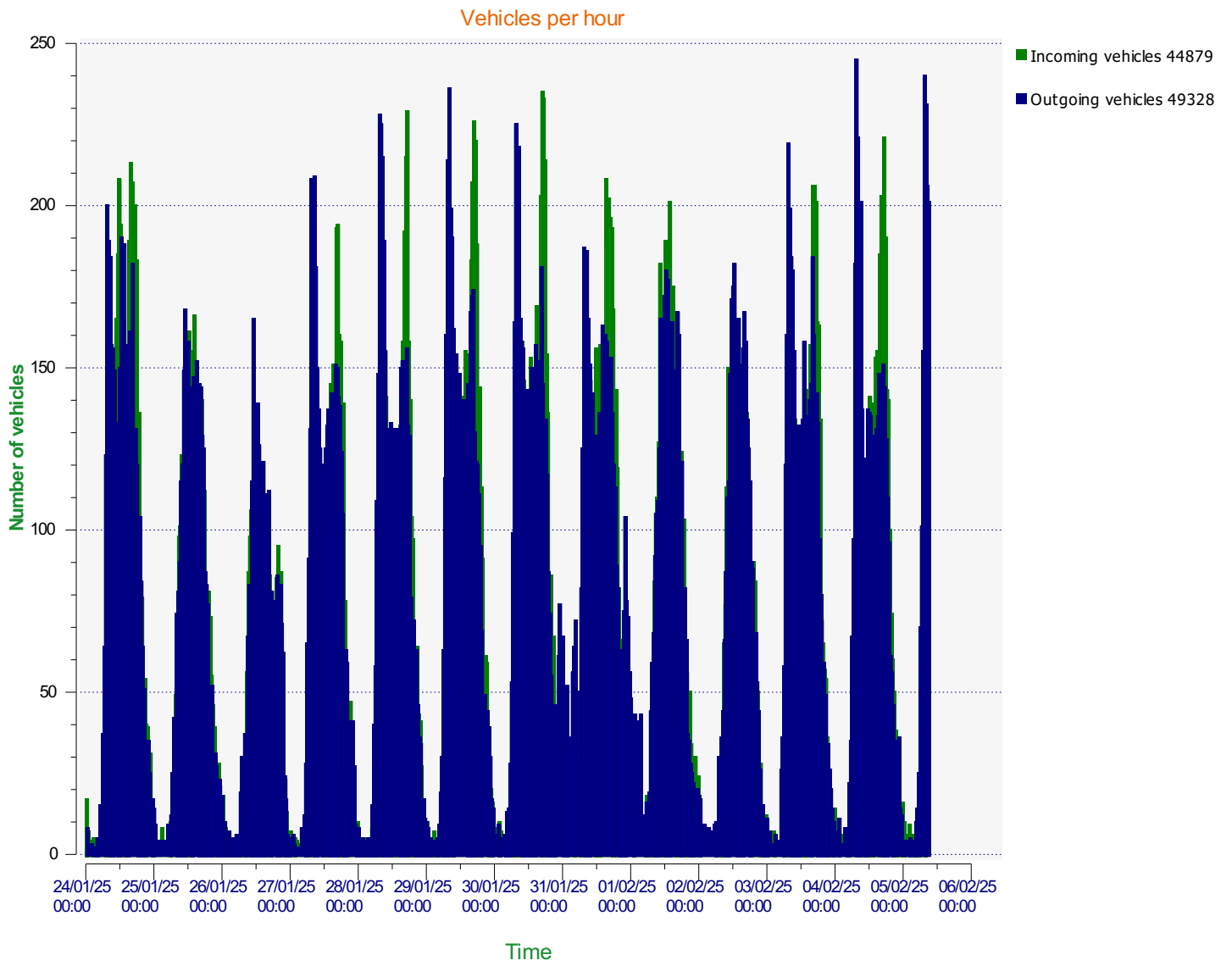
Comments:



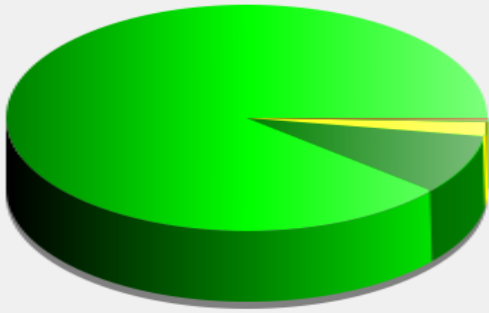
Start date: Friday, January 24, 2025 12:00 AM
End date: Wednesday, February 5, 2025 9:00 AM

Location:

Comments:



Incoming vehicles



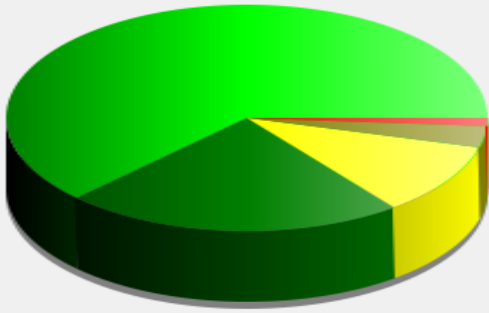
■	<= 30 Mph : 39,897 - (88.90 %)
■	31 - 35 Mph : 3,818 - (8.51 %)
■	36 - 40 Mph : 907 - (2.02 %)
■	41 - 45 Mph : 185 - (0.41 %)
■	46 - 65 Mph (and more) : 72 - (0.16 %)

Start date: Friday, January 24, 2025 12:00 AM
End date: Wednesday, February 5, 2025 9:00 AM

Location:

Comments:

Outgoing vehicles

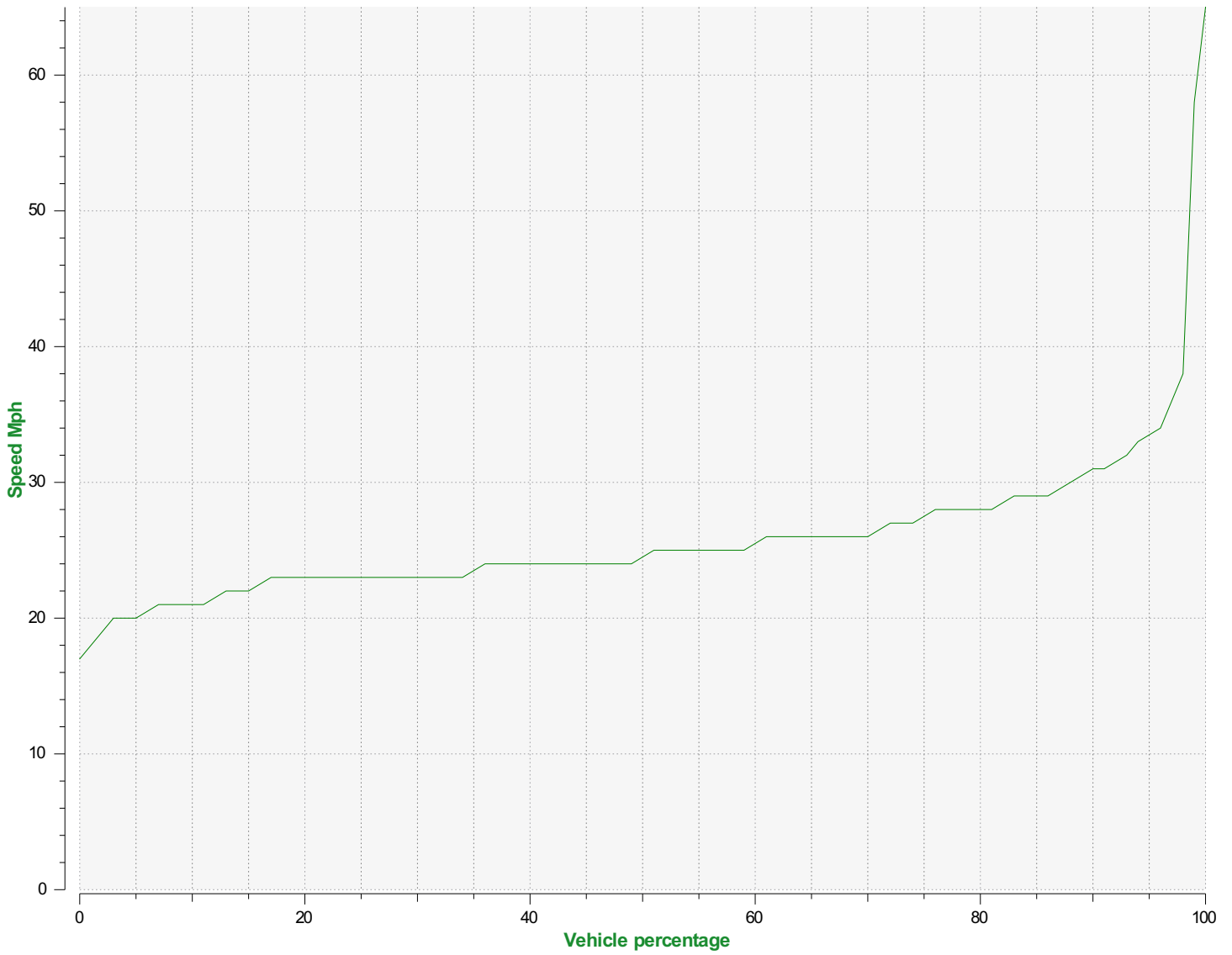


- <= 30 Mph : 30,838 - (62.52 %)
- 31 - 35 Mph : 11,329 - (22.97 %)
- 36 - 40 Mph : 5,092 - (10.32 %)
- 41 - 45 Mph : 1,501 - (3.04 %)
- 46 - 65 Mph (and more) : 568 - (1.15 %)

Start date: Friday, January 24, 2025 12:00 AM
End date: Wednesday, February 5, 2025 9:00 AM

Location:

Comments:



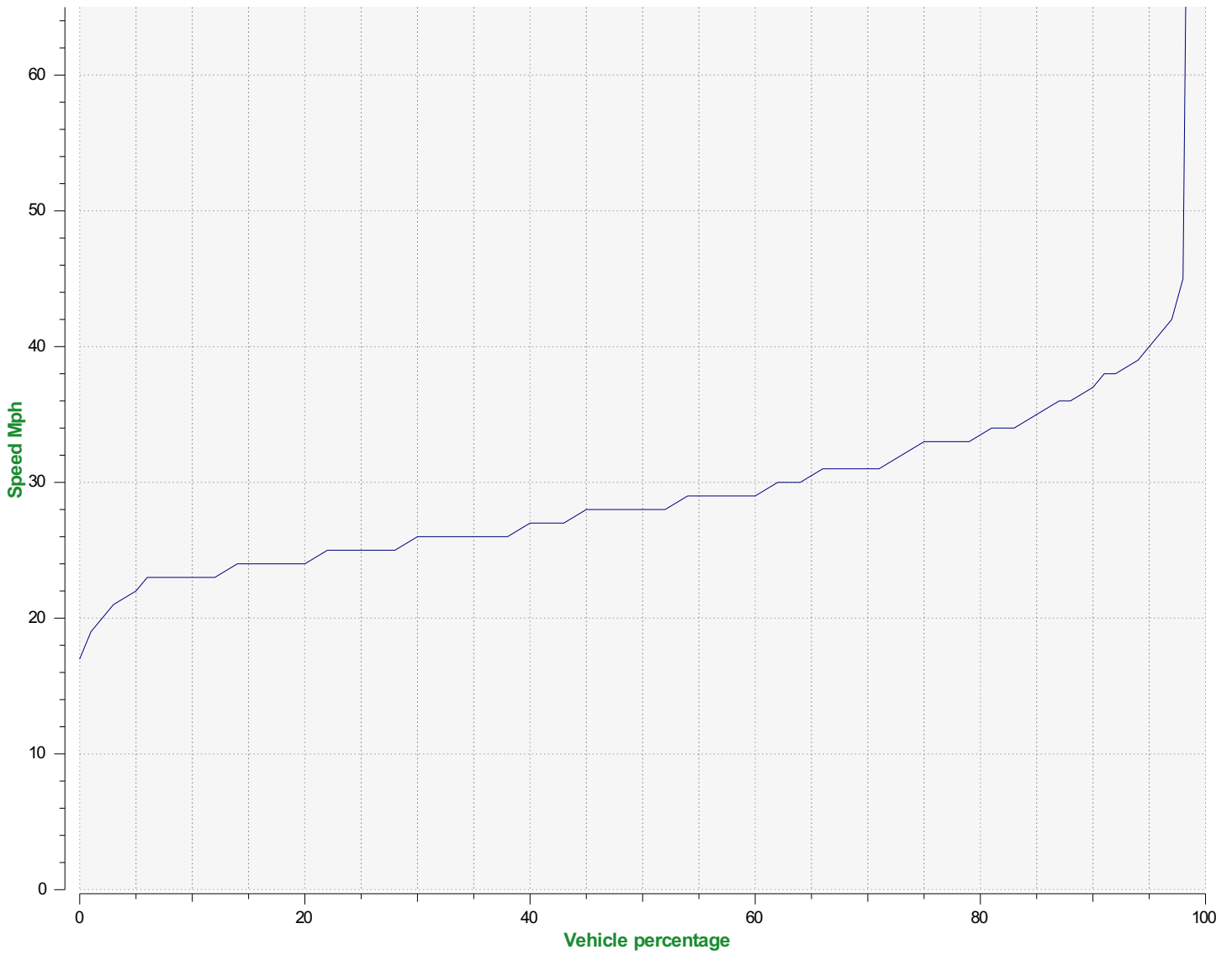
Speed percentiles (incoming)

V30: 23.00Mph **V50:** 24.00Mph **V85:** 29.00Mph

Start date: Friday, January 24, 2025 12:00 AM
End date: Wednesday, February 5, 2025 9:00 AM

Location:

Comments:



Speed percentile(outgoing)

V30: 26.00Mph **V50:** 28.00Mph **V85:** 35.00Mph

Start date: Friday, January 24, 2025 12:00 AM
End date: Wednesday, February 5, 2025 9:00 AM

Location:

Comments: