



Élan Cité

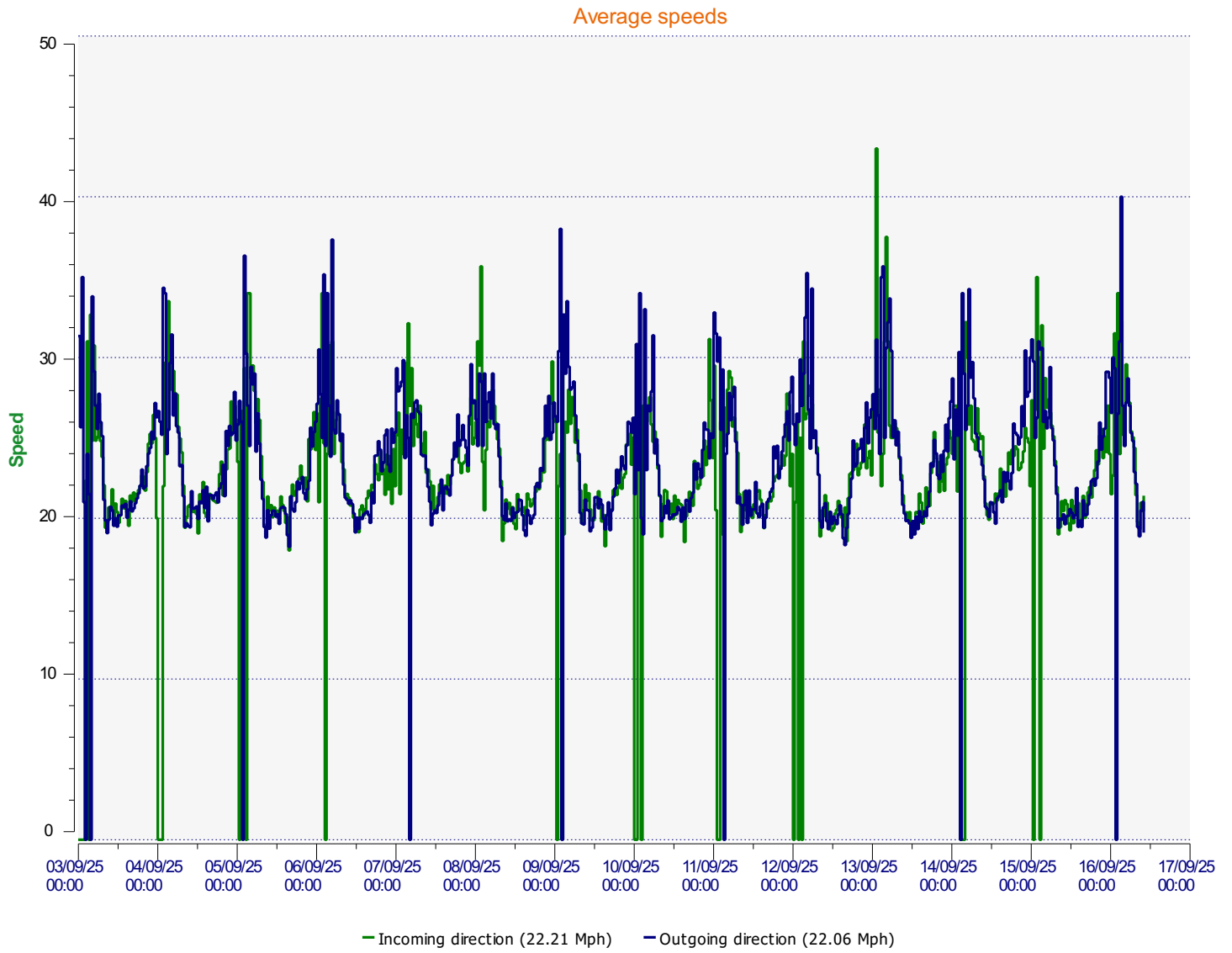


DÉTECTER • INFORMER • SÉCURISER

Start date: Wednesday, September 3, 2025 12:00 AM
End date: Tuesday, September 16, 2025 10:30 AM

Location: George Lane - 30mph

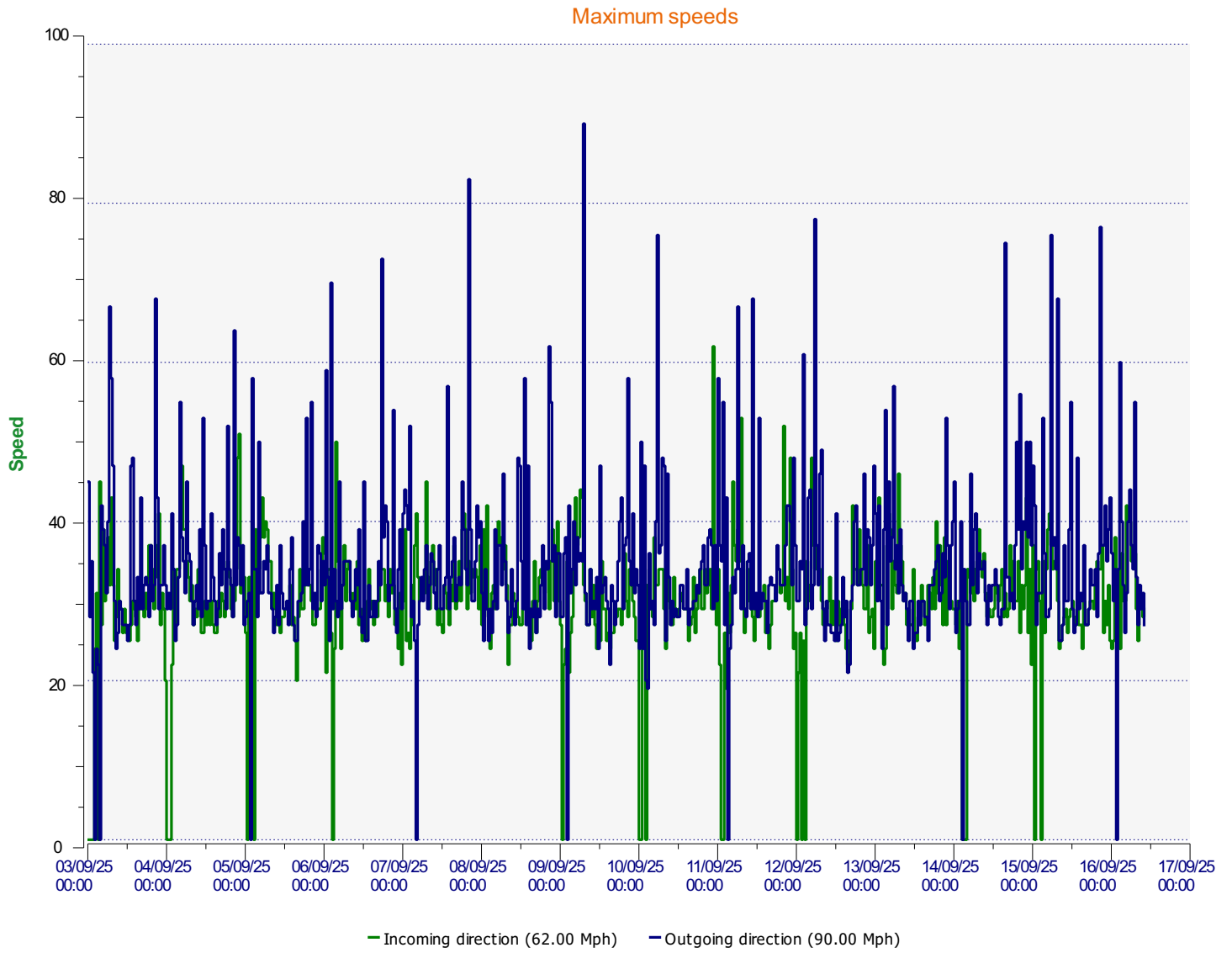
Comments:



Start date: Wednesday, September 3, 2025 12:00 AM
End date: Tuesday, September 16, 2025 10:30 AM

Location:

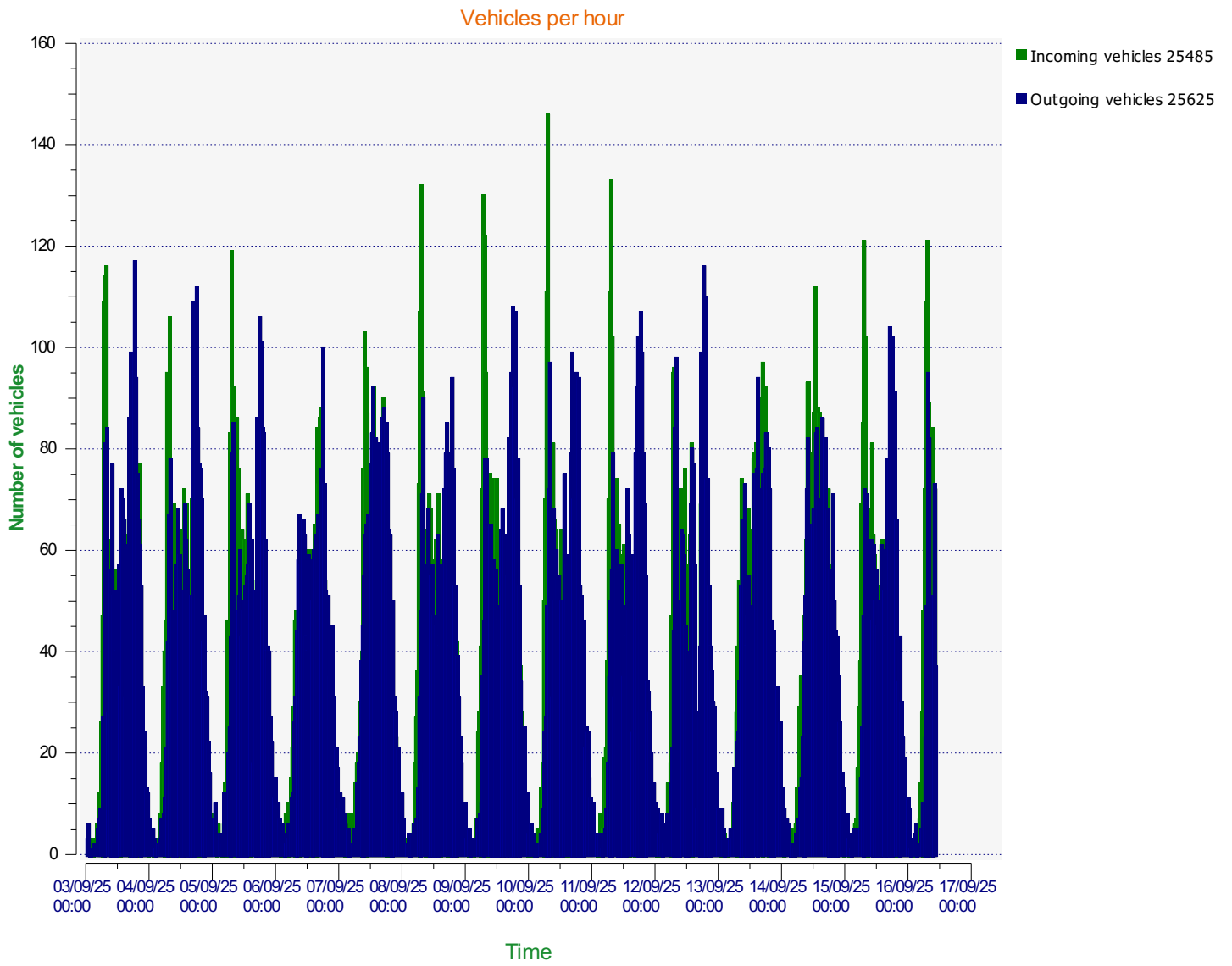
Comments:



Start date: Wednesday, September 3, 2025 12:00 AM
End date: Tuesday, September 16, 2025 10:30 AM

Location:

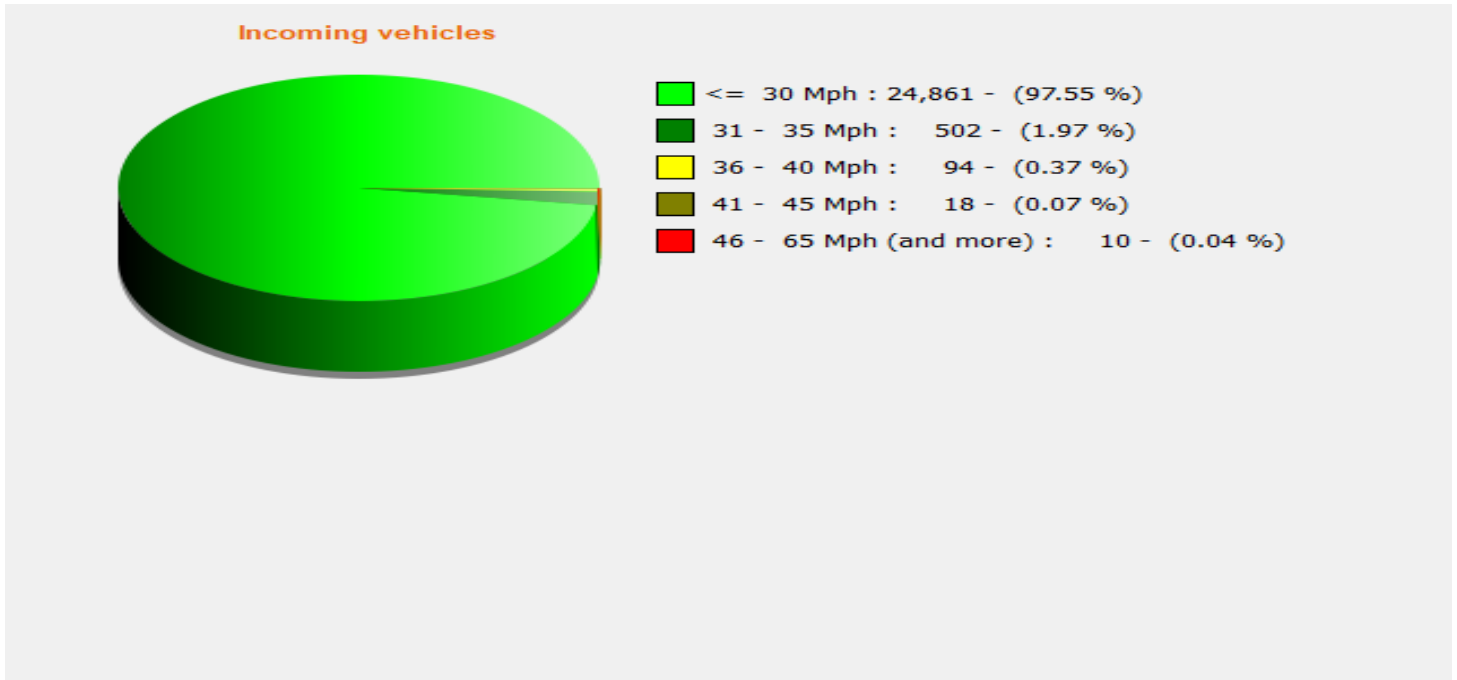
Comments:



Start date: Wednesday, September 3, 2025 12:00 AM
End date: Tuesday, September 16, 2025 10:30 AM

Location:

Comments:

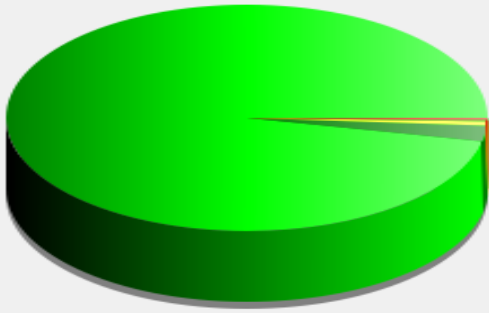


Start date: Wednesday, September 3, 2025 12:00 AM
End date: Tuesday, September 16, 2025 10:30 AM

Location:

Comments:

Outgoing vehicles

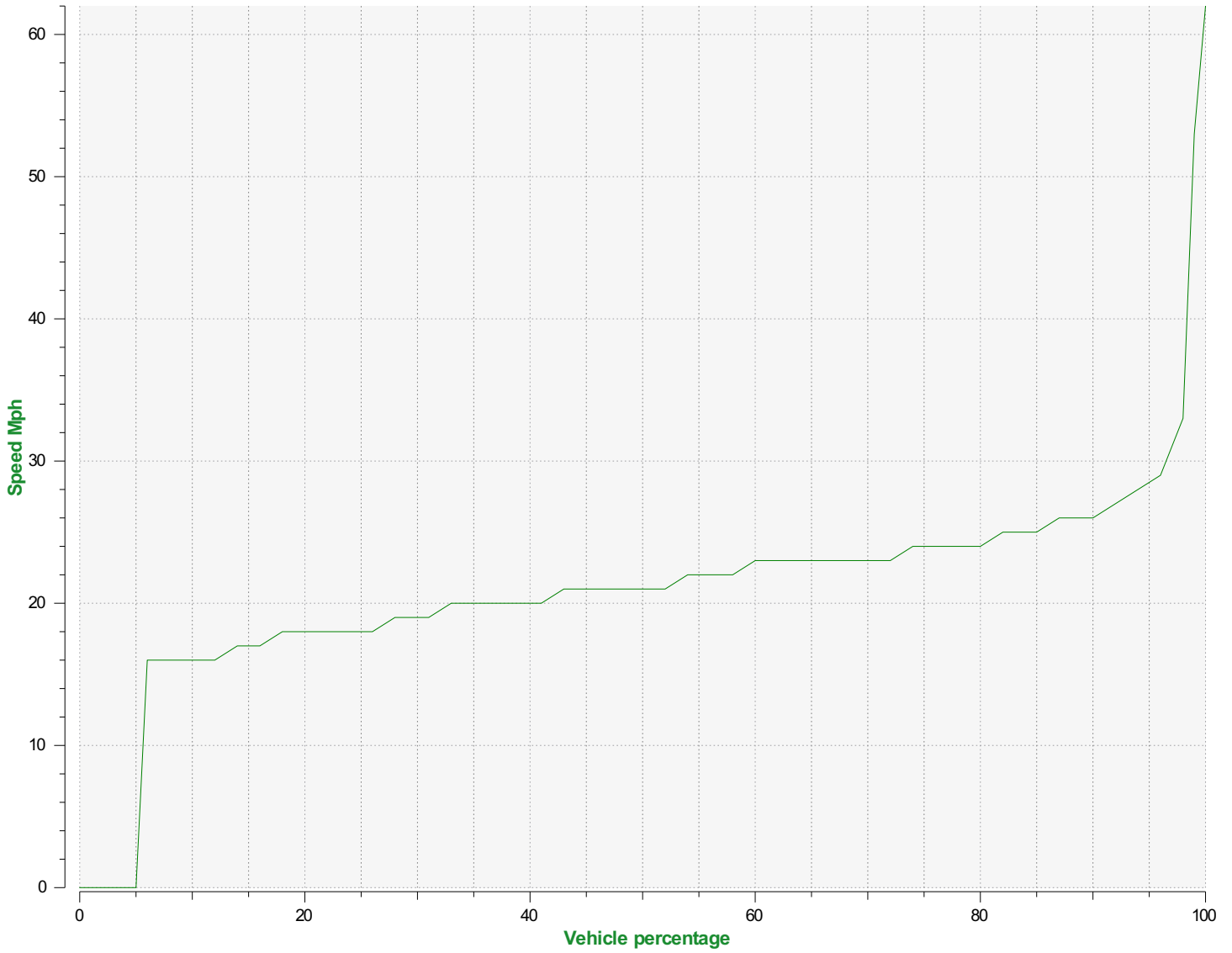


■	<= 30 Mph : 24,774 - (96.68 %)
■	31 - 35 Mph : 574 - (2.24 %)
■	36 - 40 Mph : 160 - (0.62 %)
■	41 - 45 Mph : 42 - (0.16 %)
■	46 - 65 Mph (and more) : 75 - (0.29 %)

Start date: Wednesday, September 3, 2025 12:00 AM
End date: Tuesday, September 16, 2025 10:30 AM

Location:

Comments:



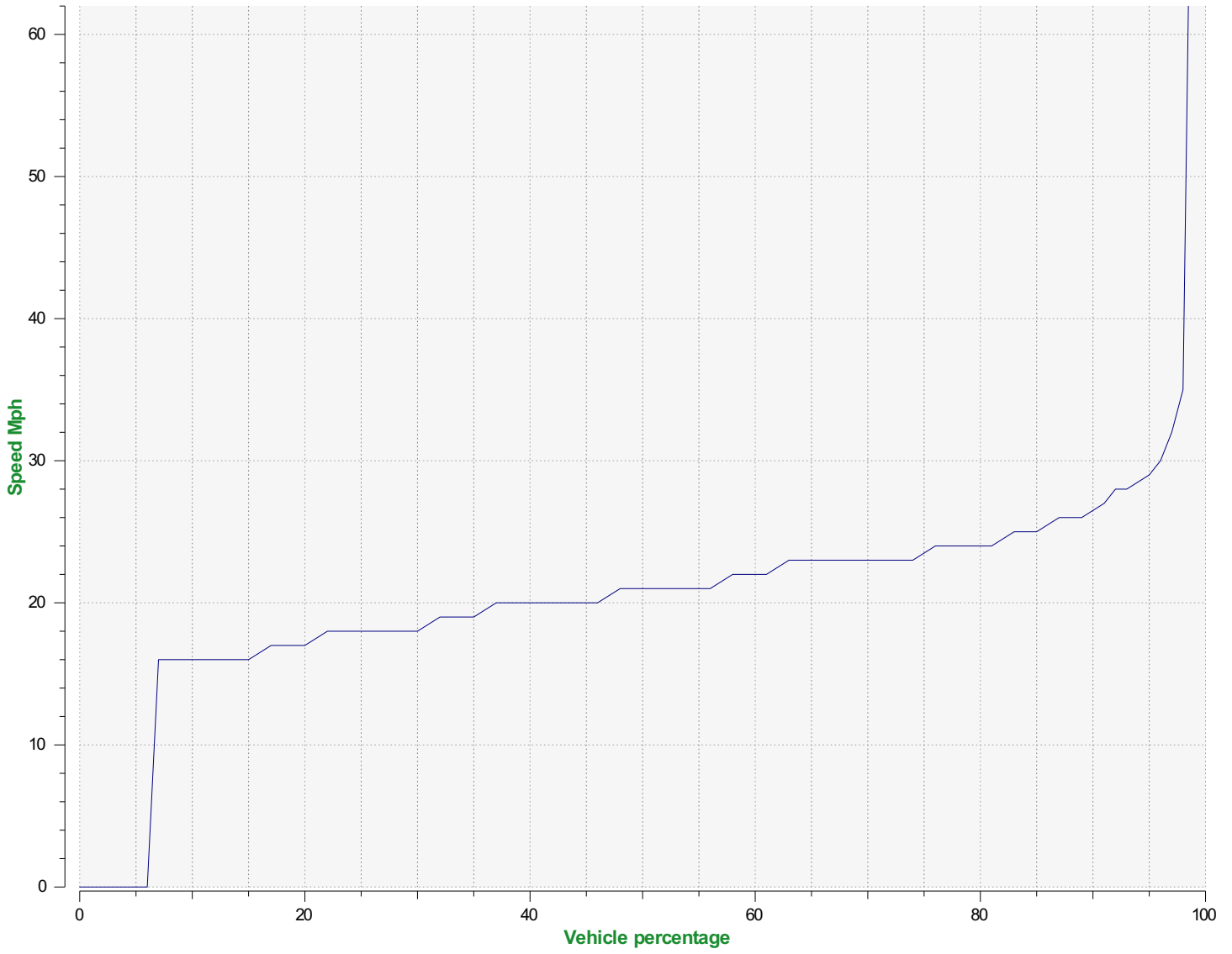
Speed percentiles (incoming)

V30: 19.00Mph **V50:** 21.00Mph **V85:** 25.00Mph

Start date: Wednesday, September 3, 2025 12:00 AM
End date: Tuesday, September 16, 2025 10:30 AM

Location:

Comments:



Speed percentile(outgoing)

V30: 18.00Mph **V50:** 21.00Mph **V85:** 25.00Mph

Start date: Wednesday, September 3, 2025 12:00 AM
End date: Tuesday, September 16, 2025 10:30 AM

Location:

Comments: