



Élan Cité

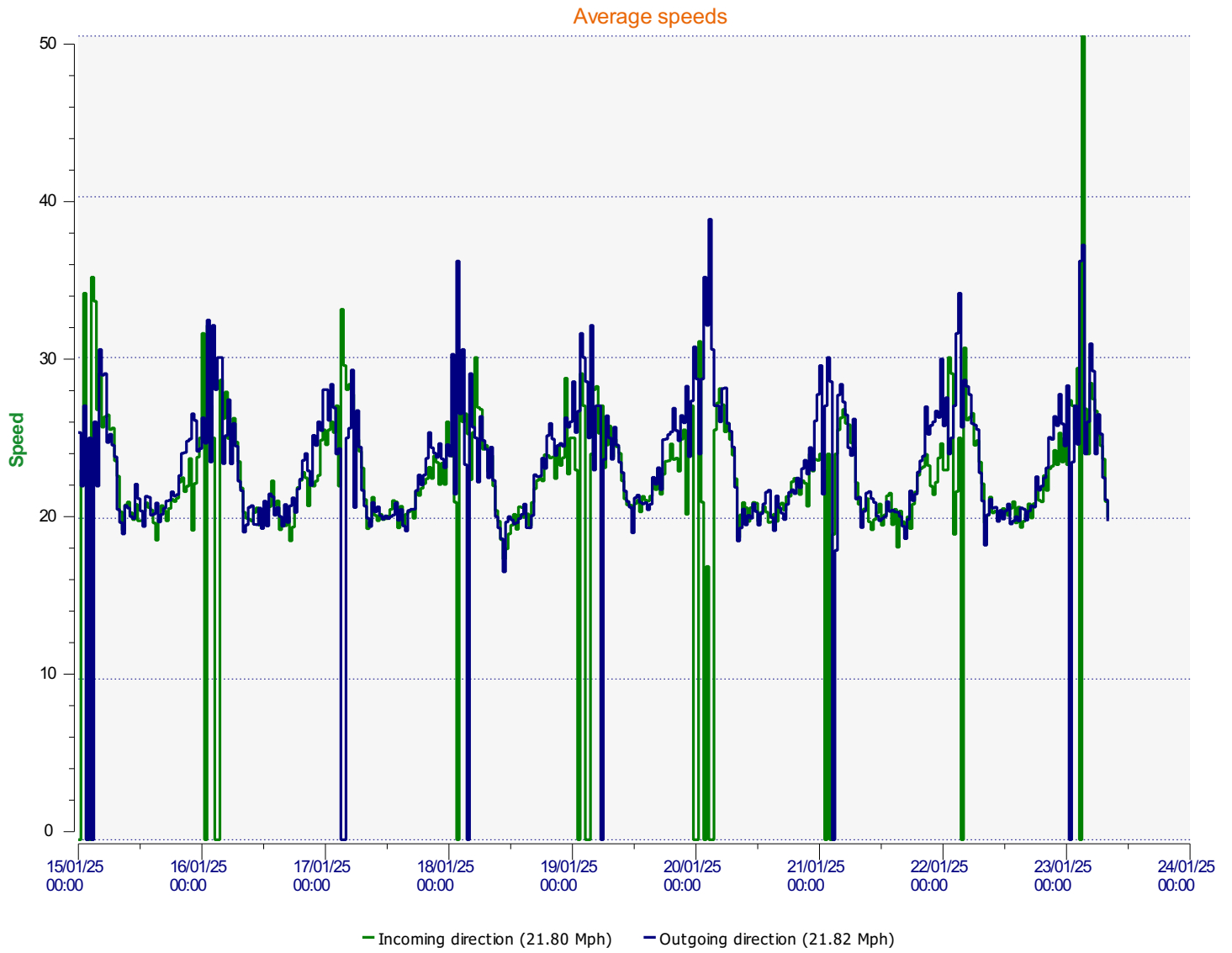


DÉTECTER • INFORMER • SÉCURISER

Start date: Wednesday, January 15, 2025 12:00 AM
End date: Thursday, January 23, 2025 8:30 AM

Location: George Lane - 30mph

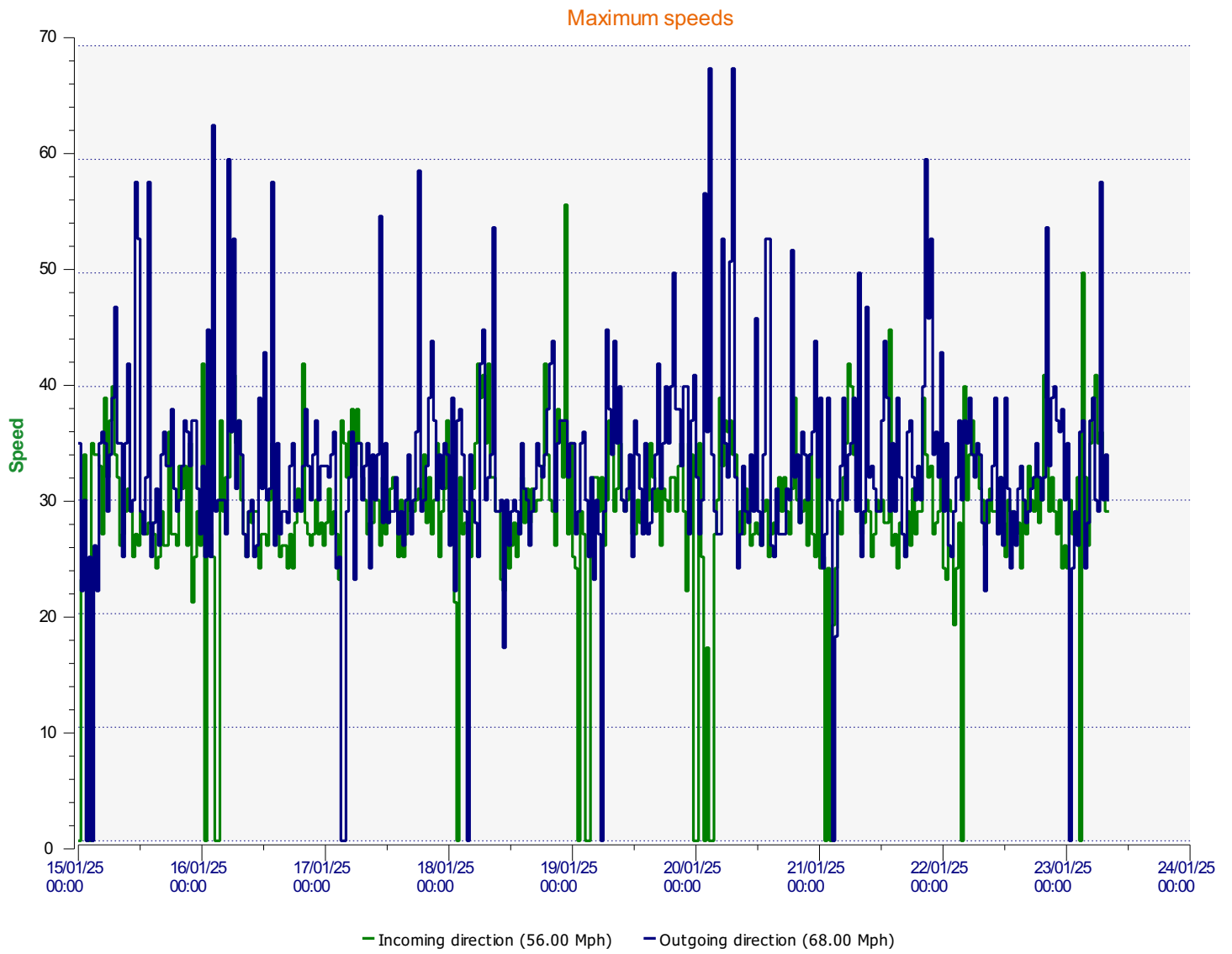
Comments:



Start date: Wednesday, January 15, 2025 12:00 AM
End date: Thursday, January 23, 2025 8:30 AM

Location:

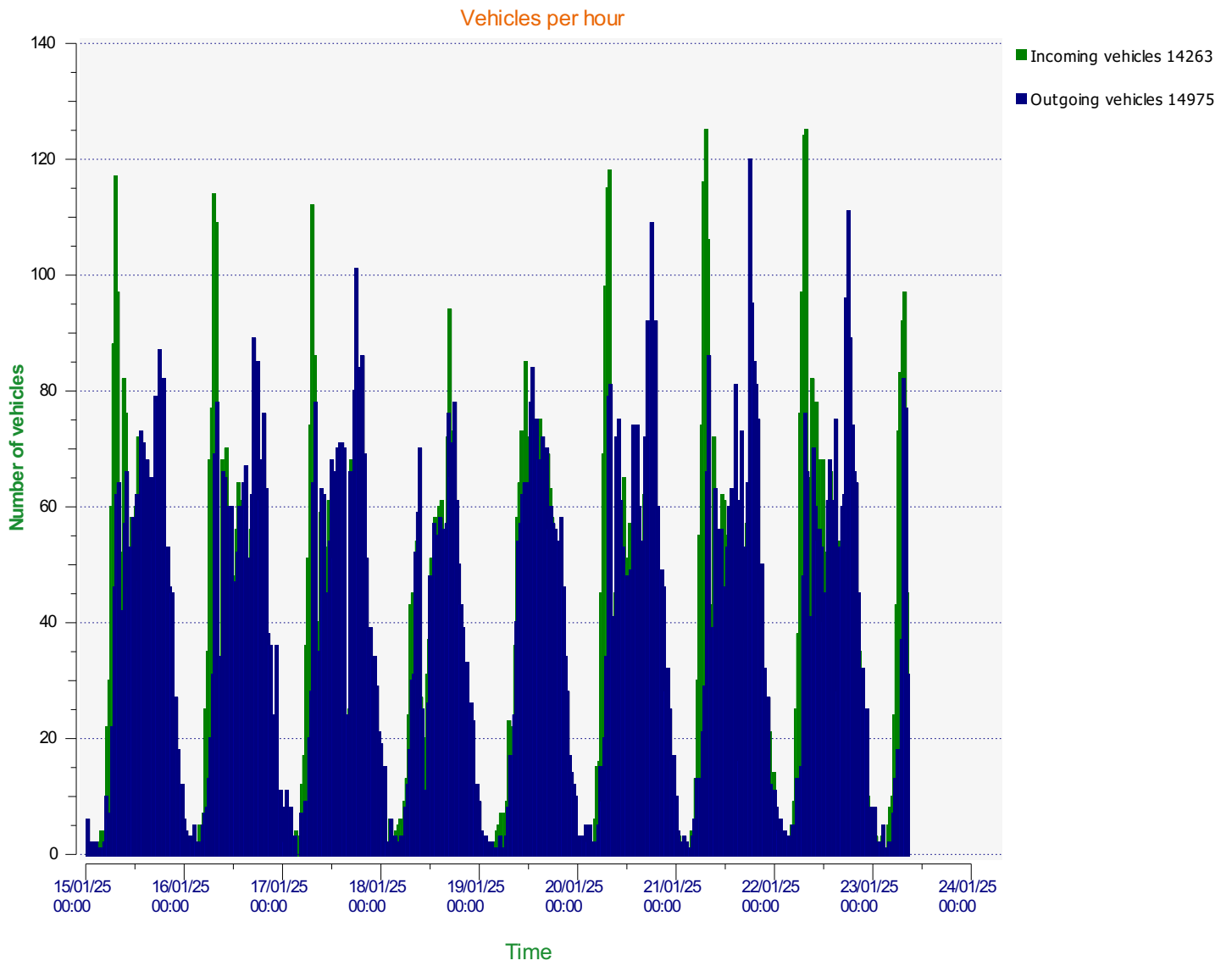
Comments:



Start date: Wednesday, January 15, 2025 12:00 AM
End date: Thursday, January 23, 2025 8:30 AM

Location:

Comments:

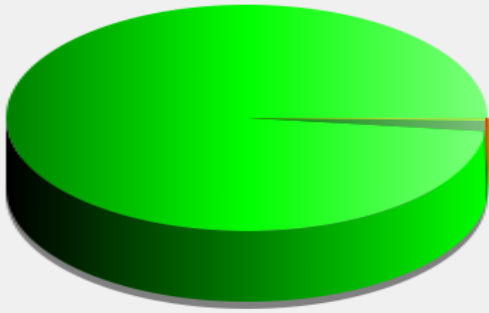


Start date: Wednesday, January 15, 2025 12:00 AM
End date: Thursday, January 23, 2025 8:30 AM

Location:

Comments:

Incoming vehicles



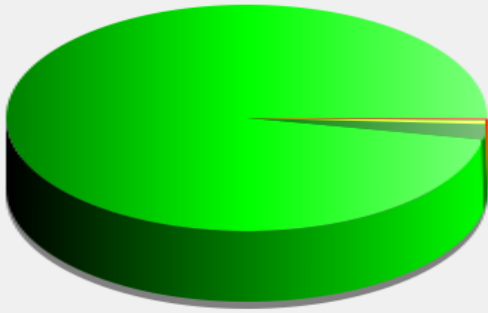
■	<= 30 Mph : 13,992 - (98.10 %)
■	31 - 35 Mph : 224 - (1.57 %)
■	36 - 40 Mph : 34 - (0.24 %)
■	41 - 45 Mph : 11 - (0.08 %)
■	46 - 65 Mph (and more) : 2 - (0.01 %)

Start date: Wednesday, January 15, 2025 12:00 AM
End date: Thursday, January 23, 2025 8:30 AM

Location:

Comments:

Outgoing vehicles

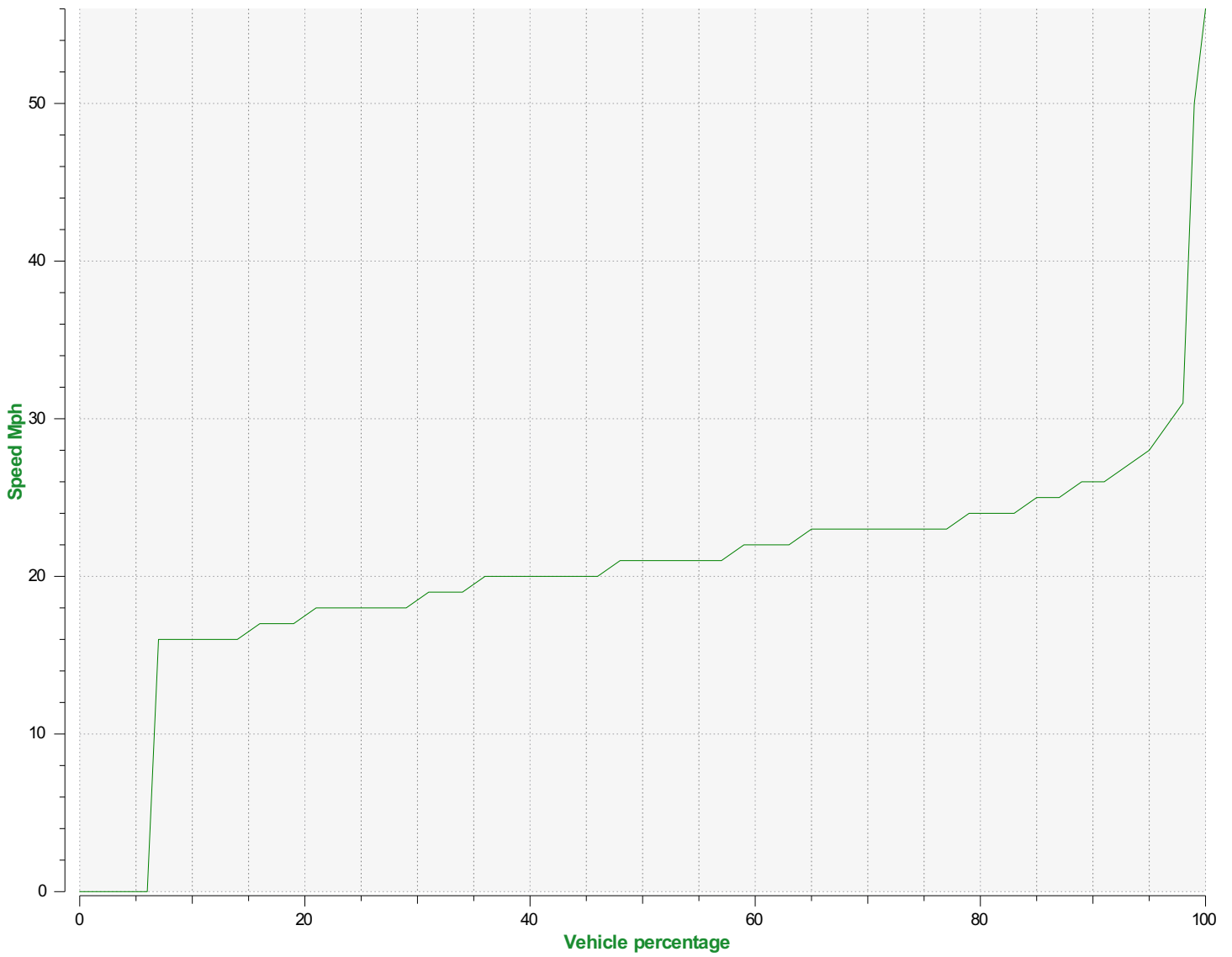


■	<= 30 Mph : 14,513 - (96.91 %)
■	31 - 35 Mph : 332 - (2.22 %)
■	36 - 40 Mph : 79 - (0.53 %)
■	41 - 45 Mph : 19 - (0.13 %)
■	46 - 65 Mph (and more) : 32 - (0.21 %)

Start date: Wednesday, January 15, 2025 12:00 AM
End date: Thursday, January 23, 2025 8:30 AM

Location:

Comments:



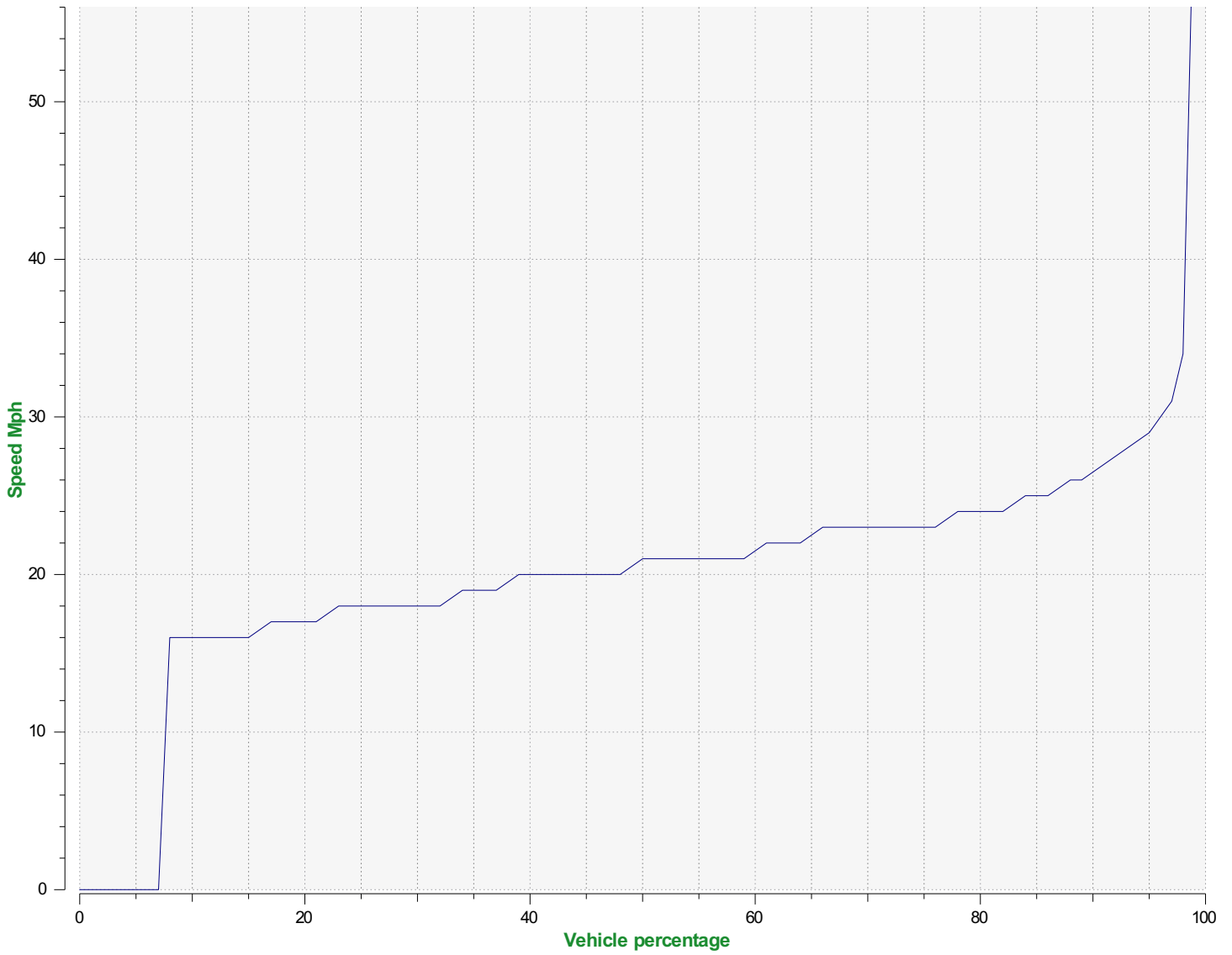
Speed percentiles (incoming)

V30: 18.00Mph **V50:** 21.00Mph **V85:** 25.00Mph

Start date: Wednesday, January 15, 2025 12:00 AM
End date: Thursday, January 23, 2025 8:30 AM

Location:

Comments:



Speed percentile(outgoing)

V30: 18.00Mph **V50:** 21.00Mph **V85:** 25.00Mph

Start date: Wednesday, January 15, 2025 12:00 AM
End date: Thursday, January 23, 2025 8:30 AM

Location:

Comments: